

CHARTER A BENETEAU FIRST 45f5

Designed by Bruce Farr & Pininfarina

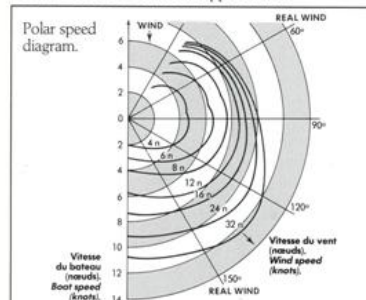


Elegance and power of the Bruce Farr hull lines.



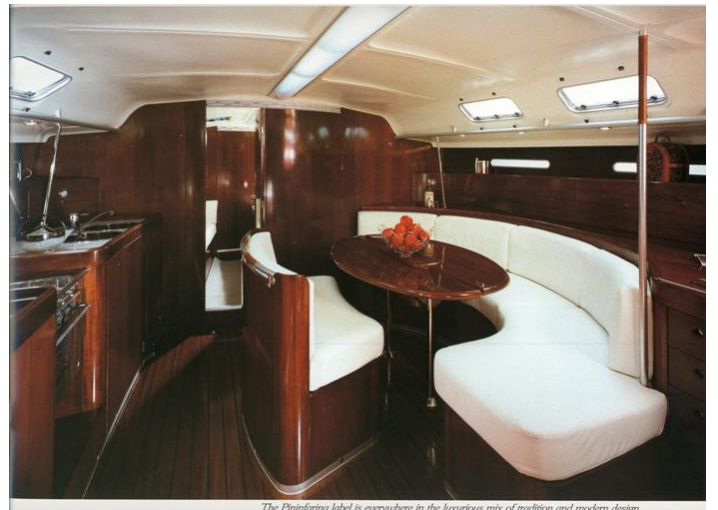
Specifications	
Architect	Bruce Farr
Designer	Pininfarina
Overall length	14.20 m
Hull length	13.90 m
Waterline	11.10/11.90 m
Max beam	4.25 m
Draft (wing keel)	1.80 m
Draft (bulb keel)	2.15 m
Draft (lead keel)	2.40 m
Displacement (approx.)	10.5 T
Ballast (approx.)	3.8 T
Sail area	
Mainsail	53 sqm
Genoa (racing)	58 sqm
Genoa (cruising)	52 sqm
Spinnaker (approx.)	120 sqm
Fractional rigging:	I: 16.20 - J: 4.60 P: 16.90 - E: 5.70
Water (approx.)	650 l
Diesel fuel (approx.)	160 l
French Sailing category	Class 1

Boats in the photo may have optional equipment.
For the standard version, please consult the general specification. ABS approval.
Bureau VERITAS individual approbation.





The quality of materials is the source of that most unique atmosphere



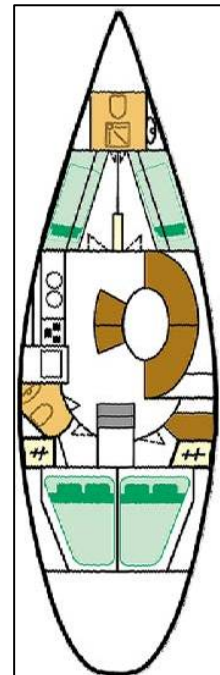
The Primitiva label is everywhere in the luxurious mix of tradition and modern design

BENETEAU FIRST 45F5 – BLUE STAR ATHENS - GREECE



Owner : Socrates Panorios
Location : Athens
Address : Kyprou 24
15127 Athens Greece
Tel. +30 210 6136712
Email : sokpan@ath.forthnet.gr

Cabins : 4
Berths : 8/10
Toilets : 2





Sailing yacht Beneteau First 45f5 has 4 cabins for 8-10 persons on board, has large salon with kitchen, navigation table and a large oval table and 2 bathrooms.

Sailing yacht Beneteau First 45f5 is fast sailing yacht for fast and comfort charter and regatta sailing. It is suitable for fast and comfort family sailing holidays and for team sailing in regattas.

The First 45f5's designer, **Bruce Farr**, is the master of fast hull designs. Famous designer **Pininfarina** has also left his stamp of genius. The First 45f5 is obviously a **Beneteau**, the worlds leading yacht builder. From the keel to the masthead, the First 45f5 is born in to performance. Advanced keel design, modern rudder, long waterline, fine entry and minimum wetted surface. Surprisingly, the Pininfarina look is never unjustifiably aggressive. Its strength exists in the purity of its form. The strong, dynamic lines of the deck plan, the audacious perfection of the interior accommodation, well sailed, brilliantly fitted out, First 45f5 continues on her course. "Firstissimo" to the finish line.

Accommodation Double Beds: **2**, Bank Beds: **4**, Convertible Salon Bed Double: **1**, Toilets: **2**, Total Berths: **10**, Showers: **3**, **Licensed for: 10**

Sails & Extra Equipment Sail Material **Bainbridge CL-P, Racing Cut**, Roller Genoa, Lazy Jacks, Gennaker, Spinnaker, **Feathering Propeller Variprofile and Racing Equipment after request possible**

Deck Equipment Cockpit Table, Cockpit Shower, Electric Anchor Windlass, Dinghy, Mooring Gear, Gangway

Navigation GPS, Wind Instruments, Speedlog, Depth Sounder, VHF, Navigation Aids, Full Set of Charts, Greek Waters Pilot, List of Lights

Galley Galley Fully Equipped, Gas Stove Oven, Electric Fridge 12v, Icebox

Facilities Hot Water, Radio CD

Special Comments The Beneteau First 45f5 “Blue Star” is a foul equipped yacht ideal for charter - fast sailing holidays or for participation in Regattas in Greek seas.

It was **the winner** of 45th Aegean Sailing Rally 2008 (ORCiN) and had the **4th place** (ORCiN) in the 46th Aegean Sailing Rally 2009 with charter crews.

Charter this boat named Blue Star for racing or cruising in Aegean or Ionian sea.

